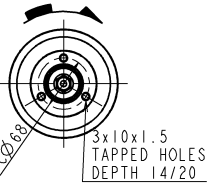


CAREER

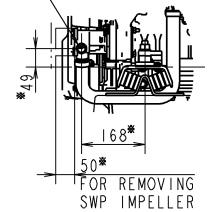
改1形 YDSBD-14004に本図を継ぎ足す。  
 1改(2014.6.30)  
 ・スロットルセンサ位置詳細  
 ・ベルト引30モデル(フロント排水用)追加  
 ・緊急停止スイッチ位置詳細  
 ・右コネクタ位置詳細  
 (YDSBD-14012) (継田)  
 2改(2014.7.18)  
 コネクタ位置の誤記を訂正する(YDSBD-14015) (継田)  
 3改(2016.4.11)  
 サービスカバーオプション設定(YDSBD-16002) (西村)  
 REV.4(2018.3.20) CHANGE TOP COVER AND BELT COVER  
 (YDSBD-18002)

A  
 DIRECTION OF ROTATION (ENGINE)



DETAIL OF PULLEY  
 SCALE 1:5  
 ARROW A

SEA WATER INLET (ENGINE)  
 (THE SAME AS 4JH57/45)

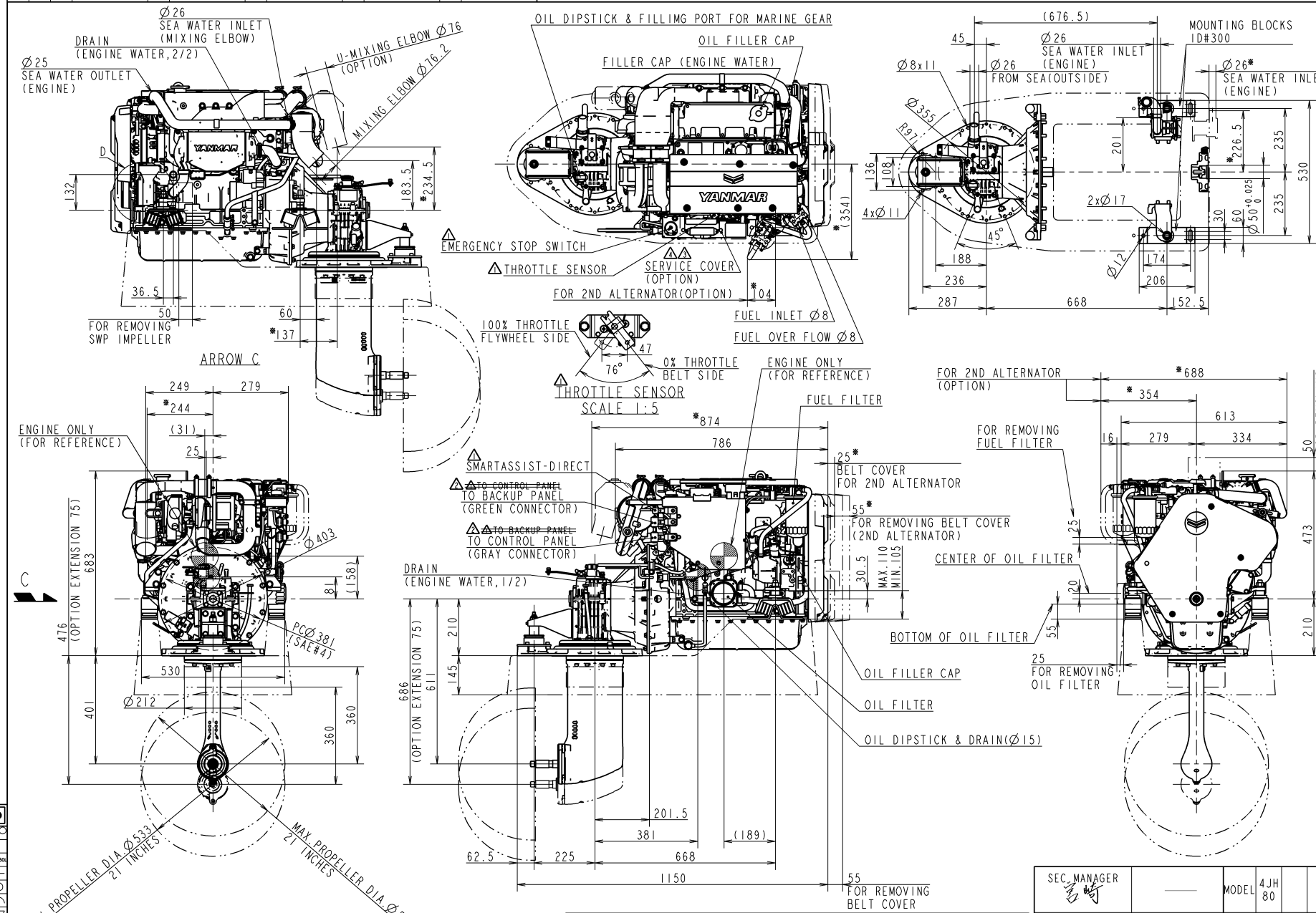


PART D  
 FRONT MOUNT SWP (OPTION)

MANAGER

1110

SEC. MANAGER 北本	MODEL 4JH80	QTY -	SCALE 1:10
CHECKED 北本	SPECIALIST	DATE: Y.M.D 2014.3.17	MATERIAL
DESIGNED Y. Nuta	DRAWN A. Hori	NAME OUTLINE, 4JH80-SD60	
			CODE B2-29676-0061



SPECIFICATIONS			
Model	4JH80		
Continuous Power (ISO 8665)	kW/min <sup>-1</sup>	53.5 / 3101	
Fuel Stop Power	Propeller shaft (ISO 8665)	kW/min <sup>-1</sup>	---
	Crankshaft (ISO 8665)	kW/min <sup>-1</sup>	58.8 / 3200
Reduction ratio	2.23 [ 2.49 ] ---		
Dry mass	kg	Approx. 274	
Direction of rotation at Propeller (Forward)	BOTH		

- NOTE
1. MOUNTING BLOCKS ARE COMPRESSED ABOUT 4mm BY ENGINE WEIGHT.
  2. DIMENSIONS OF MOUNTING BLOCK IN THIS DRAWING ARE WITHOUT ANY DEFORMATION.
  3. MOUNTING BLOCKS ARE EQUIPPED FOR STANDARD ACCESSORY.
  4. THE FIGURES MARKED WITH \* SHOW THE DIMENSIONS WITH U-MIXING ELBOW, OR OPTIONAL PARTS.
  5. ◎ SHOWS THE CENTER OF GRAVITY.