



PARTS CATALOG

Published

2008/7 (Jul.)

0CF10-G57602

Introduction

1. This parts catalog contains the previous information on the SD40, SD40-4T as well as the new one on the SD50, SD50-4T.

	Parts catalog No.	Date of issue	Remarks
First edition	000Y00F5760	Jan. , 2000	No need
1st edition (supplement)	000Y00F5761	July. 2001	No need
2nd edition (supplement)	000Y00F5762	Dec. , 2004	

2. Standard finish color. Yanmar magicron gray
- | | |
|------------------------|----------------------|
| Parts No. 977620-10450 | 1L (Packed in a can) |
| Parts No. 977620-40450 | 4L (Packed in a can) |
| Parts No. 977620-30450 | Spray (1 piece) |

3. Drive No.

Model	Manufactured	Drive No.
SD40	~Dec. , 2003	~06804
	Jan. , 2003~	0001-03~
	Jan. , 2004~	0001-04~
SD40-4T	~Dec. , 2003	~T5233
	Jan. , 2004~	T001-04~
SD50	2004~	0001-04~
SD50-4T	2004~	T001-04~

4. This parts catalog does not contain the technical data needed for maintenance service.
5. The illustrations used in this parts catalog have been simplified for clarity.
6. The contents of this parts catalog are subject to change without notice.
7. Be sure to use only Yanmar genuine parts for repairs. If imitation parts are used, it may cause engine defects.

How to read this Parts Catalog.

1. Parts mentioned in Parts Catalog may not necessarily be standard equipping parts
2. Parts change may be made without prior notice.
3. Form of this Parts Catalog.

Y00F2161 29. FUEL INJECTION PUMP (W/BOOST)											
① REF.	② LEV.	PARTS No.	DESCRIPTION	QTY						I	R
				(A)	(B)	(C)	(D)	(E)	(F)		
1		729595-51390	FUEL INJECTION PUMP	1	1	1	1	1			
1-1		729595-51391	FUEL INJECTION PUMP	1	1	1	1	1		N	1
		(A=E00185) (B=E00200)									
3		26022-060162	SCREW M 6X16	9	9	9	9	9			
I 3-1		26022-060162	SCREW M 6X16	4	4	4	4	4			K
		(A=E00156) (B=E00156) (C=E00156) (D=E00156) (E=E00156)									
4		129470-51040	CAMSHFT	9	9	9	9	9			
5		122710-51050	BEARING. ROLLER	9	9	9	9	9			
6		129470-51060	RETAINER	9	9	9	9	9			

⑥	Remarks
(1)	BOOST COMPEMSATOR TYPE. OPTIONAL PART. TO E#00155 (4JH-DT, 4JH-DTZ)

① Ref. No,

The Ref. No, in the list may not be in accordance with the Ref. No, on illustration.

(Ex.) illustration No, List heed No,
 1 1 (Before change) → 1-1 (After change)

When interchangeable symbol N, and k, illustrations for the new parts are sometimes omitted.

② Lev. (Level)

Indication and Meaning of Level

Level Hereunder is given the relation among the number (1,2,3) the level and the nominal parent-child relationship.

1 ---- Parent parts (Assembly parts)

2 ---- Child parts included in " 1 " (Semi-Assembly parts, component parts of Assembly parts.)

3 ---- Child parts included in " 2 ", Grand-child parts in terms of " 1 ".

(Component parts of Semi-Assembly parts.)

Note) A parts of non-sale parts are illustrated but not listed.

③ Change Mark

Change Mark " I " is given to the part for which a design change was made at this time.

The design change was not shown in the last published Parts Catalog.

④ Interchangeability Mark

In the case where a part change took place, one of the following interchangeability marks is indicated for that part

Symbol	Interchangeability	Contents note
N	Old ← → New	New Part is interchangeable for Old Part but not interchangeable conversely.
Q	Old ← → New	New Part is not interchangeable for Old Part but interchangeable conversely.
R	Old ← → New	New Part is interchangeable for Old Part and vice versa.
S	Old ← → New	New Part is not interchangeable for Old Part and vice versa.
W		Part newly added.
Z		Part discontinued.
F		Not interchangeable single part but interchangeable by set of the related parts.
K		Changed only in quantity used.

⑤ Effective Machine No,

When a part is changed, Effective Machine No, of a Model for which the part is applicable is indication

In each column of (A)-(F).

Product Symbol	Product No,	Product Symbol	Product No,
C	Clutch No, Compressor No,	M	Machine No,
D	Drive No,	T	Tractor No,
E	Engine No,	Note 1)※	Date

Note 1) Date may follow the symbol in some cases.(Ex.) ※1996.01

Note 2) As far as engine models shown by " XXX " are concerned, the modification of the parts could not be Predicted or the engine models themselves could not be identified.

Note 3) (A=E/#00185) means that the design change on the part has been effective for the model at the, column (A) (in the case, for 4JH-DT) on and from E/(Engine Serial Number) 00185

⑥ Remarks Mark

Figures or alphabets (Symbols) are entered in the remark column.

The comments (remarks) on the pertinent parts are indicated in the lower part of the list by the same symbols a those stated above.

CONTENTS

MODEL : SD40/50(-4T)
PC NO : OCF10-G57602

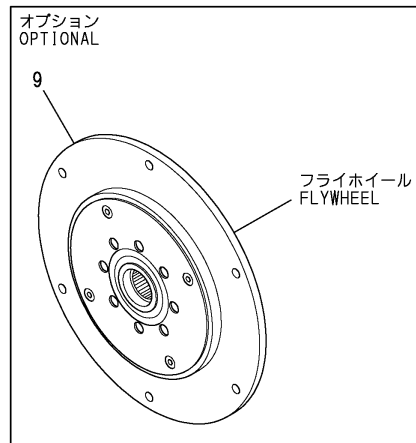
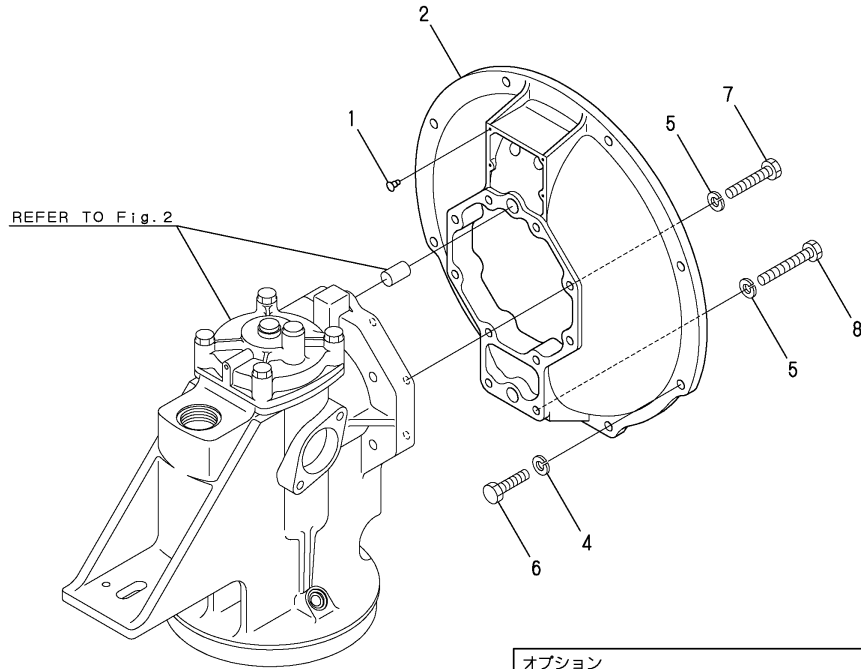
Fig.No. GROUP NAME
SD40/50(-4T)

Fig.No. GROUP NAME

1. MOUNTING FLANGE
2. UPPER GEAR HOUSING
3. LOWER GEAR HOUSING
4. RUBBER MOUNT & SEAL FLANGE
5. SHIFT LEVER
6. LUB.OIL WASTE PUMP
7. TOOL
8. EXTENSION(OPTIONAL)
9. SPECIAL TOOL(A)(OPTIONAL)
10. SPECIAL TOOL(B)(OPTIONAL)

Fig.1. MOUNTING FLANGE

P/C NEWS No.:Y00F5762-1
PUBLISHED:2005/2



OCF10-G57602 1. MOUNTING FLANGE

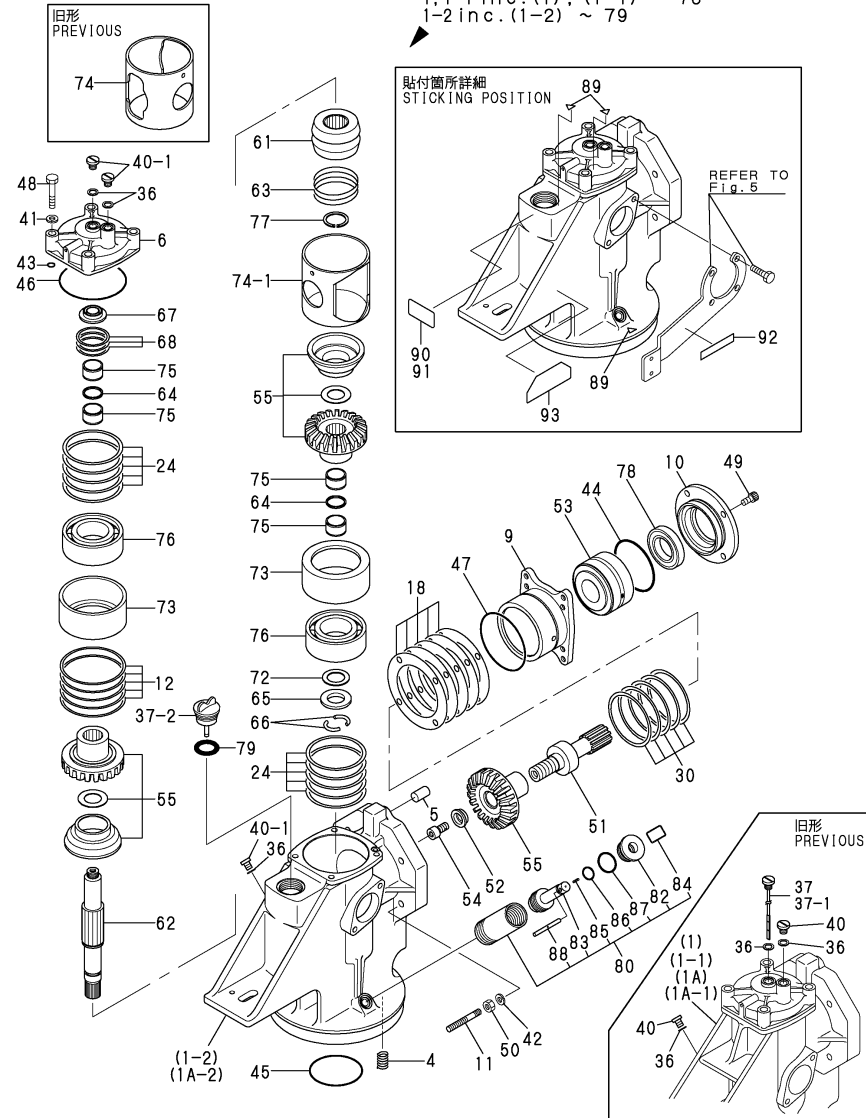
(A)=SD40
(B)=SD40-4T
(C)=SD50

(D)=SD50-4T
(E)=
(F)=

REF.	LEV.	PARTS NO.	DESCRIPTION	Q'TY						I	R
				(A)	(B)	(C)	(D)	(E)	(F)		
1	1	196311-02060	RIVET 2X5	4	4	4	4				
2	1	196440-02110	MOUNTING FLANGE #5	1		1					
2A	1	196440-02130	MOUNTING FLANGE #4		1		1				
4	1	22217-080000	SPRING WASHER 8	8		8					
4A	1	22217-100000	SPRING WASHER 10		8		8				
5	1	22217-080000	SPRING WASHER 8	10	10	10	10				
6	1	26206-080302	BOLT M8X30	8							
I 6-1	1	26206-080202	BOLT M8X20	8		8					N
		(A=*2001.02)									
6A	1	26206-100302	BOLT M10X30		8		8				
7	1	26206-080402	BOLT M8X40	8	8	8	8				
8	1	26206-080502	BOLT M 8X 50 PLATED	2	2	2	2				
I 9	1	196440-04300	TORFLEX250(SP26)		1		1				W
		(B=*2004.03)									
I 9A	1	196440-04310	TORFLEX250(SP10)		1		1				W
		(A=*2004.03)									

Fig.2. UPPER GEAR HOUSING

P/C NEWS No:Y00F5762-1
PUBLISHED:2005/2



Remarks
(1)INTERCHANGEABLE BY SIMULTANEOUS REPLACEMENT WITH FIG.3 NO.1-2, OR NO.36-1.
THIS DESIGN CHANGE IS NOT APPLIED TO DRIVE NO.0109-04 AND T109-04.

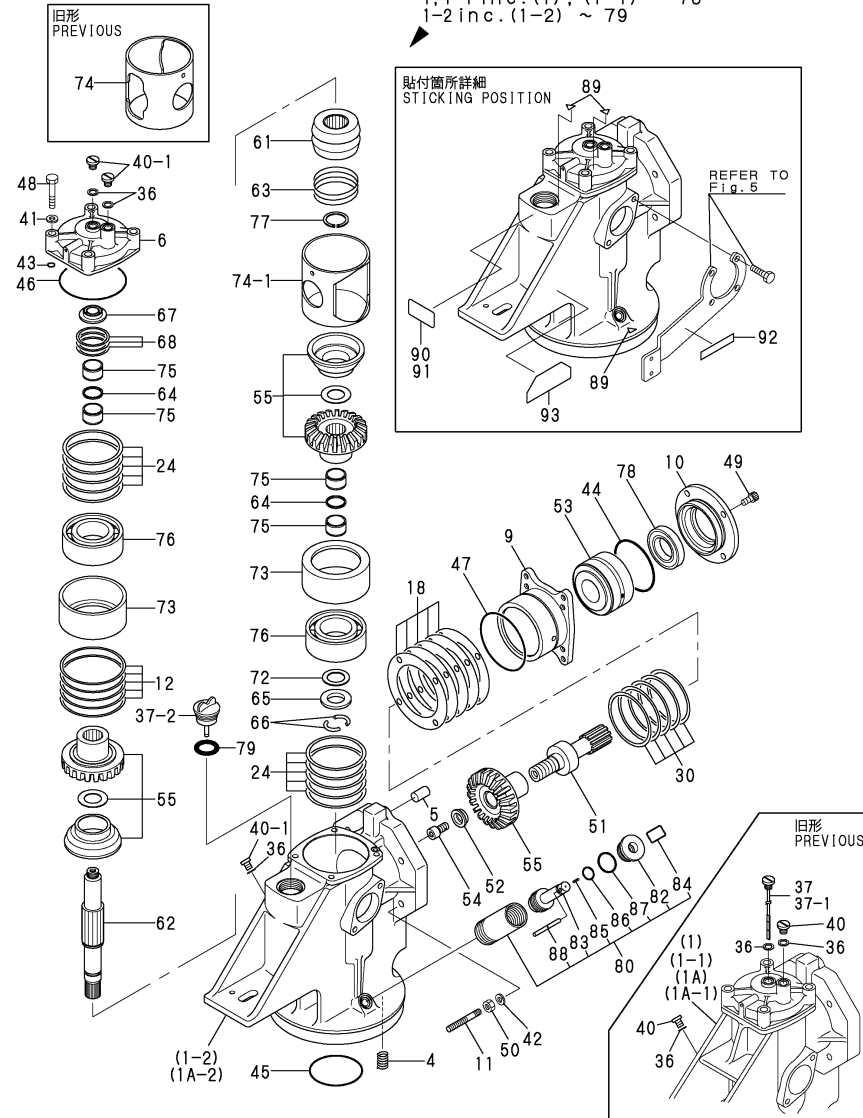
OCF10-G57602 2. UPPER GEAR HOUSING

(A)=SD40 (D)=SD50-4T
(B)=SD40-4T (E)=
(C)=SD50 (F)=

REF.	LEV.	PARTS NO.	DESCRIPTION	QTY						I	R
				(A)	(B)	(C)	(D)	(E)	(F)		
1	1	796440-02900	HOUSING ASSY, GEARS	1							
I	1-1	796440-02901	HOUSING ASSY, GEARS	1						S	1
		(A=D#0022-04)									
I	1-2	796440-02902	HOUSING ASSY, GEARS	1	1						N
		(A=*2004.02)									
1A	1	796440-02940	HOUSING ASSY, GEARS		1						
1A-1	1	796440-02941	HOUSING ASSY, GEARS		1					S	1
		(B=D#T022-04)									
I	1A-2	796440-02942	HOUSING ASSY, GEARS		1		1				N
		(B=*2004.02)									
4	3	196420-02050	INSEAT, LOCK	8	8	8	8				
5	2	177099-02130	STRAIGHT PIN	2	2	2	2				
6	2	196440-02140	UPPER COVER CMP	1	1	1	1				
9	2	196440-02160	HOUSING,BEARING	1	1	1	1				
10	2	196440-02170	CASE,SEAL	1	1	1	1				
11	2	196440-02180	STUD BOLT	4	4	4	4				
12	2	196320-02230	SHIM SET	1	1	1	1				
18	2	196440-02250	SHIM SET 81/118	1	1	1	1				
24	2	196322-02320	SHIM SET 75/85	2	2	2	2				
30	2	196440-02320	SHIM SET 100*120	1	1	1	1				
36	2	189010-01130	GASKET	3	3	3	3				
37	2	196326-02410	DIPSTICK	1	1						
I	37-1	196440-02410	DIPSTICK	1	1						N
		(A=*2003.09) (B=*2003.09)									
I	37-2	196420-02350	CAP W/DIPSTICK	1	1	1	1				S
		(A=*2004.02) (B=*2004.02)									
40	2	196326-02420	PLUG	2	2						
I	40-1	2 196326-02420	PLUG	3	3	3	3				K
		(A=*2004.02) (B=*2004.02)									
41	2	22217-080000	SPRING WASHER 8	4	4	4	4				
42	2	22217-080000	SPRING WASHER 8	4	4	4	4				
43	2	24311-000090	O-RING 1A P-9.0	1	1	1	1				
44	2	24321-000750	O-RING 1A G-75.0	1	1	1	1				
45	2	24321-000800	O-RING 1A G-80.0	1	1	1	1				
46	2	24321-000950	O-RING 1A G-95.0	1	1	1	1				
47	2	24341-000850	O-RING 1A S-85.0	1	1	1	1				
48	2	26206-080452	BOLT M 8X 45 PLATED	4	4	4	4				
49	2	26450-080162	BOLT M 8X 16	4	4	4	4				
50	2	26716-080002	NUT M 8	4	4	4	4				
51	2	196440-04130	SHAFT,PINION #5	1		1					
51A	2	196440-04150	SHAFT,PINION #4		1		1				
52	2	196322-04240	WASHER	1	1	1	1				
53	2	196322-04781	BEARING	1	1	1	1				
54	2	196322-04940	BOLT	1	1	1	1				
55	2	196322-04152	GEAR SET	1	1	1	1				
61	2	196326-04250	DRIVE CON	1	1	1	1				
62	2	196322-04301	SHAFT,CLUTCH	1	1	1	1				
63	2	196322-04321	SPRING	1	1	1	1				
64	2	196322-04340	COLLAR	2	2	2	2				
65	2	196322-04361	COLLER, THRUST	1	1	1	1				
66	2	196322-04370	RING	2	2	2	2				

Fig.2. UPPER GEAR HOUSING

P/C NEWS No:Y00F5762-1
PUBLISHED:2005/2



Remarks
(1)INTERCHANGEABLE BY SIMULTANEOUS
REPLACEMENT WITH FIG.3 NO.1-2,
OR NO.36-1.
THIS DESIGN CHANGE IS NOT APPLIED
TO DRIVE NO.0109-04 AND T109-04.

(A)=SD40
(B)=SD40-4T
(C)=SD50

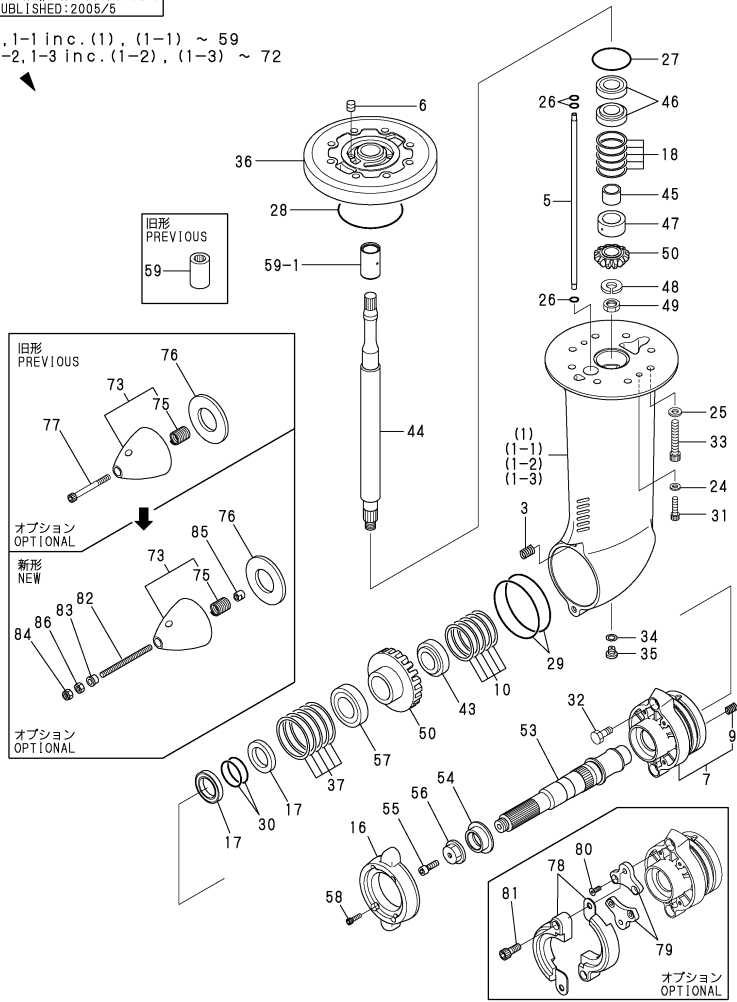
(D)=SD50-4T
(E)=
(F)=

REF.	LEV.	PARTS NO.	DESCRIPTION	QTY						I	R
				(A)	(B)	(C)	(D)	(E)	(F)		
67	2	196324-04380	NUT M16 LEFT-HAND	1	1	1	1				
68	2	196320-04400	COLLAR SET, THRUST	1	1	1	1				
72	2	196320-04410	WASHER, THRUST	1	1	1	1				
73	2	196324-04480	SLEEVE, BEARING	2	2	2	2				
74	2	196324-04490	SPACER, BEARING	1	1						
I 74-1	2	196440-04490	SPACER, BEARING	1	1	1	1				N
(A=*2003.07) (B=D/#T5228)											
75	2	196322-04731	NEEDLE K242817, BER.	4	4	4	4				
76	2	196322-04760	BEARING	2	2	2	2				
77	2	22292-000300	CIRCLIP S-30	1	1	1	1				
78	2	24413-456209	SEAL SC45 62 09, OIL	1	1	1	1				W
(A=FROM 1ST)											
I 79	2	24311-000320	O-RING 1A P-32.0	1	1	1	1				W
(A=*2004.02) (B=*2004.02)											
80	1	196431-02390	COCK ASSY, C.WATER	1	1	1	1				
I 80-1	1	196450-02390	COCK ASSY, WATER 25	1	1	1	1				N
(A=XXXXXXXX) (B=XXXXXXXX) (C=XXXXXXXX) (D=XXXXXXXX)											
82	2	196431-02950	GUIDE,CW COCK	1	1	1	1				
83	2	196431-02960	VALVE,CW COCK	1	1	1	1				
84	2	196420-02981	SPRING	1	1	1	1				
85	2	22351-020010	SPRING PIN 2X10	1	1	1	1				
86	2	24311-000150	O-RING 1A P-15.0	1	1	1	1				
87	2	24321-000250	O-RING 1A G-25.0	1	1	1	1				
88	2	196420-02580	HANDLE,CW COCK	1	1	1	1				
89	1	196440-02750	LABEL	3	3	3	3				W
(A=*1999.12)											
90	1	196440-02760	LABEL	2	2	2	2				W
(A=*1999.12)											
91	1	196440-02770	LABEL	1							W
(A=*1999.12)											
I 91-1	1	196440-02771	LABEL, OIL LEVEL	1		1					S
(A=*2004.04)											
91A	1	196440-02780	LABEL, CAUTION		1						
I 91A-1	1	196440-02781	LABEL, CAUTION		1		1				S
(B=*2004.04)											
92	1	177073-02431	LABEL	1	1	1	1				W
(A=*1999.12)											
93	1	196440-02060	LABEL	1	1						W
(A=*1999.12)											
93A	1	196450-02060	LABEL, NAME			1	1				

Fig.3. LOWER GEAR HOUSING

P/C NEWS No:Y00F5762-3
PUBLISHED:2005/5

1,1-1 inc.(1), (1-1) ~ 59
1-2,1-3 inc.(1-2), (1-3) ~ 72



Remarks
 INTERCHANGEABLE BY SIMULTANEOUS REPLACEMENT WITH FIG.2 NO.1-1/1A-1
 THIS DESIGN CHANGE IS NOT APPLIED TO DRIVE NO.0109-04 AND T109-04.
 INTERCHANGEABLE BY SIMULTANEOUS REPLACEMENT WITH FIG.2 NO.1-1/1A-1 AND FIG.3 NO.36-1.
 THIS DESIGN CHANGE IS NOT APPLIED TO DRIVE NO.0109-04 AND T109-04.
 INTERCHANGEABLE BY SIMULTANEOUS REPLACEMENT WITH NO.44-3 AND 50-2.

OCF10-G57602 3. LOWER GEAR HOUSING

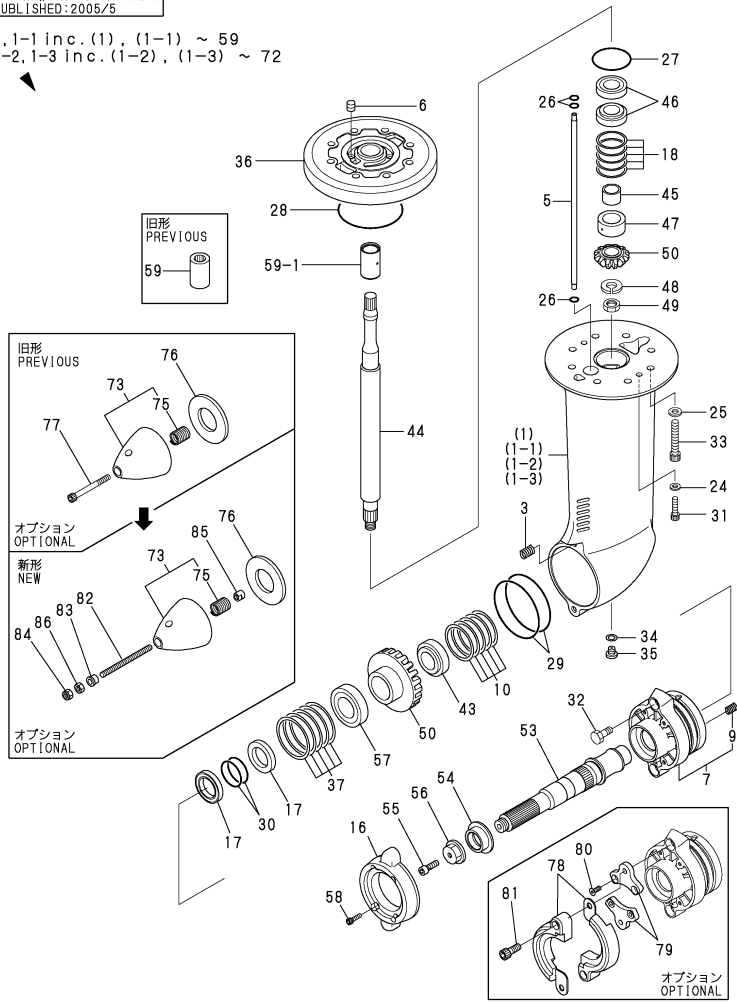
(A)=SD40 (D)=SD50-4T
 (B)=SD40-4T (E)=
 (C)=SD50 (F)=

REF.	LEV.	PARTS NO.	DESCRIPTION	QTY						I	R
				(A)	(B)	(C)	(D)	(E)	(F)		
1	1	796440-02910	GEAR CASE ASY(LOWER	1							
1-1	1	796440-02911	GEAR CASE ASY(LOWER	1	1						N
		(A=*2001.01)									
1-2	1	796440-02912	GEAR CASE ASY(LOWER	1	1						S 1
		(A=D#0022-04) (B=D#T022-04)									
1-3	1	796440-02913	GEAR CASE ASY(LOWER	1	1	1	1				N
		(A=*2004.02) (B=*2004.02)									
3	3	196420-02050	INSEAT, LOCK	2	2	2	2				
5	2	196440-02540	PIPE,OIL	1	1	1	1				
6	2	196440-02550	RUBBER PLUG	1	1	1	1				
7	2	196440-02600	REAR COVER CMP	1	1	1	1				
9	3	196420-02620	INSERT, LOCK	4	4	4	4				
10	2	196320-02650	SHIM SET	1	1	1	1				
16	2	196420-02652	ZINC,ANTI-CORROSIVE	1	1	1	1				
17	2	196440-02870	OIL SEAL	2	2	2	2				
18	2	196313-04400	SHIM SET	1	1	1	1				
24	2	22113-080000	WASHER 8	2	2	2	2				
25	2	22113-100000	WASHER 10	8	8	8	8				
26	2	24311-000070	O-RING 1A P-7.0	3	3	3	3				
27	2	24321-000300	O-RING G30	1	1	1	1				
28	2	24321-000500	O-RING 1A G-50.0	1	1						
28-1	2	24321-000550	O-RING 1A G-55.0	1	1	1	1				S
		(A=*2004.02) (B=*2004.02)									
29	2	24321-000950	O-RING 1A G-95.0	2	2	2	2				
30	2	24372-000460	BACK UP RING T2 P	2	2	2	2				
31	2	26453-080302	BOLT M 8X 30	2	2	2	2				
32	2	26453-100252	BOLT 10X25	2	2	2	2				
33	2	26453-100602	BOLT 10* 60	8	8	8	8				
34	2	189010-01130	GASKET	1	1	1	1				
35	2	196326-02420	PLUG	1	1	1	1				
36	2	196440-02240	MIDDLE PLATE	1	1						
36-1	2	196440-02241	MIDDLE PLATE	1	1						S 1
		(A=D#0022-04) (B=D#T022-04)									
36-2	2	196440-02242	DISC, MIDDLE	1	1	1	1				S
		(A=*2004.02) (B=*2004.02)									
37	2	196311-02310	SHIM SET	1	1	1	1				
43	2	24141-322060	BEARING,TAPER ROLLER	1	1	1	1				
44	2	196440-04450	SHAFT,DRIVE	1							
44-1	2	196440-04451	SHAFT,DRIVE	1	1						S
		(A=*2001.01)									
44-2	2	196440-04452	SHAFT,DRIVE	1	1						R
		(A=*2002.06) (B=D#T5116)									
44-3	2	196440-04453	SHAFT,DRIVE	1	1	1	1				S 3
		(A=*2004.02) (B=*2004.02)									
45	2	196440-04770	INNER RACE 22*28*20	1							
45-1	2	24163-228230	INNER RACE 228230	1	1	1	1				S
		(A=*2001.01)									
46	2	196440-04780	BEARING 32005X	2	2	2	2				
47	2	196440-04790	NEEDLE BEARING	1							
47-1	2	196440-04760	NEEDLE BEARING	1	1	1	1				S
		(A=*2001.01)									

Fig.3. LOWER GEAR HOUSING

P/C NEWS No:Y00F5762-3
PUBLISHED:2005/5

1,1-1 inc.(1), (1-1) ~ 59
1-2,1-3 inc.(1-2), (1-3) ~ 72



Remarks
 INTERCHANGEABLE BY SIMULTANEOUS REPLACEMENT WITH FIG.2 NO.1-1/1A-1
 THIS DESIGN CHANGE IS NOT APPLIED TO DRIVE NO.0109-04 AND T109-04.
 INTERCHANGEABLE BY SIMULTANEOUS REPLACEMENT WITH FIG.2 NO.1-1/1A-1 AND FIG.3 NO.36-1.
 THIS DESIGN CHANGE IS NOT APPLIED TO DRIVE NO.0109-04 AND T109-04.
 INTERCHANGEABLE BY SIMULTANEOUS REPLACEMENT WITH NO.44-3 AND 50-2.

OCF10-G57602 3. LOWER GEAR HOUSING

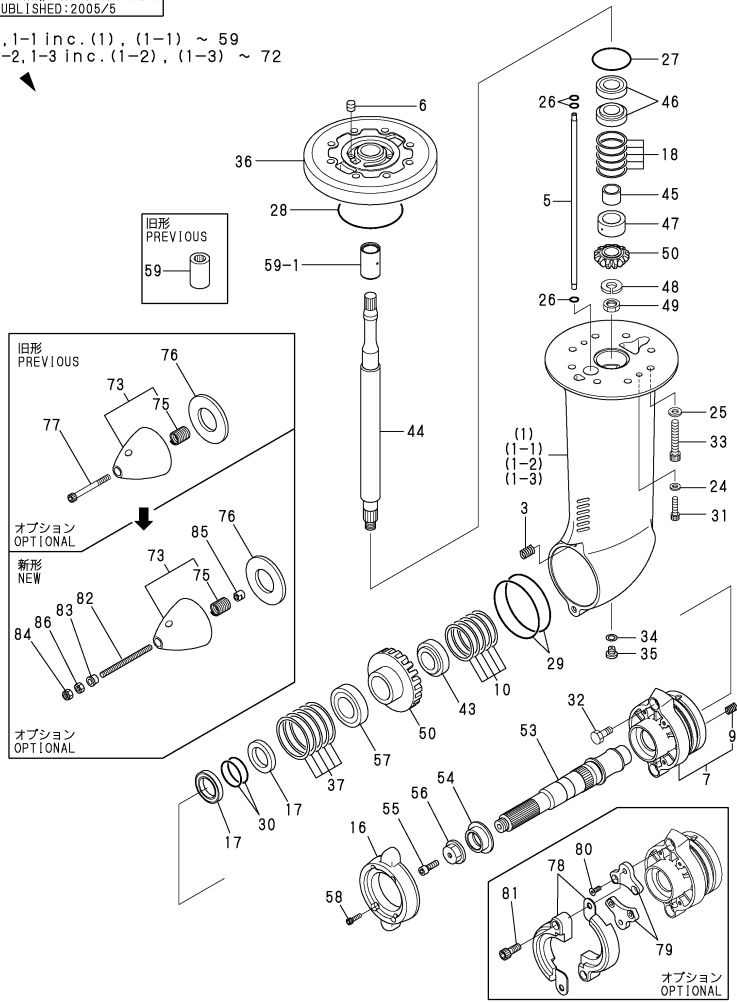
(A)=SD40 (D)=SD50-4T
 (B)=SD40-4T (E)=
 (C)=SD50 (F)=

REF.	LEV.	PARTS NO.	DESCRIPTION	Q'TY						I	R
				(A)	(B)	(C)	(D)	(E)	(F)		
48	2	196324-04910	WASHER	1	1	1	1				
49	2	26996-140002	LOCK NUT 14	1	1	1	1				
50	2	196440-04800	LOWER GEAR 13/29 SET	1							
50-1	2	196440-04801	LOWER GEAR 13/29 SET	1	1						N
		(A=*2001.01)									
50-2	2	196440-04802	LOWER GEAR 13/29 SET	1	1	1	1				S 3
		(A=*2004.02) (B=*2004.02)									
53	2	196440-04510	SHAFT, PROPELLER	1							
53-1	2	196440-04511	SHAFT, PROPELLER	1	1						N
		(A=*2000.09)									
53-2	2	196440-04512	SHAFT, PROPELLER	1	1						N
		(A=*2001.12) (B=D/#T5006)									
53-3	2	196440-04513	SHAFT, PROPELLER	1	1	1	1				R
		(A=*2002.06) (B=D/#T5116)									
54	2	196324-09250	SPACER	1	1	1	1				
55	2	196420-09260	BOLT M8X25	1	1	1	1				
56	2	196440-09300	NUT, PROPELLER	1	1	1	1				
57	2	24141-302070	ROLLER BEARING	1	1	1	1				
58	2	26453-060202	BOLT 6X20	4	4	4	4				W
		(A=FROM 1ST) (B=FROM 1ST)									
59	2	196324-04450	SLEEVE	1	1						
I 59-1	2	196440-04540	TORQUE LIMITER ASSY	1	1	1	1				S 2
		(A=D#0022-04) (B=D#T022-04)									
73	1	196440-09200	NUT ASSY, PROPELLER	1	1	1	1				W
		(A=*2001.01)									
75	2	196440-09220	INSERT 20X2.0X1.0D	1	1	1	1				W
		(A=*2001.01)									
76	1	196420-09220	WASHER, PROPELLER	1	1	1	1				W
		(A=*2001.01)									
77	1	26453-080752	BOLT M 8 X 75	1	1						W
		(A=*2001.01)									
77-1	1	196440-09260	BOLT M8X75	1	1						N
		(A=*2003.07) (B=D/#T5228)									
77-2	1	196440-09260	BOLT M8X75	1	1						Z
		(A=*2004.11) (B=*2004.11)									
78	1	196440-02660	SEPARATE ANODE	2	2	2	2				W
		(A=*2003.06) (B=D/#T5199)									
79	1	196440-02690	PLATE, SEPARATE ANODE	2	2	2	2				W
		(A=*2003.06) (B=D/#T5199)									
80	1	196440-02700	FLAT HEAD BOLT M6X16	4	4	4	4				W
		(A=*2003.06) (B=D/#T5199)									
81	1	26453-080202	BOLT M 8 X 20	2	2	2	2				W
		(A=*2003.06) (B=D/#T5199)									
82	1	196440-09150	BOLT M8X105	1	1	1	1				W
		(A=*2004.11) (B=*2004.11)									
83	1	196440-09160	SPACER	1	1	1	1				W
		(A=*2004.11) (B=*2004.11)									
84	1	196440-09170	NYLON NUT	1	1	1	1				W
		(A=*2004.11) (B=*2004.11)									
85	1	196440-09180	NUT M8	1	1	1	1				W
		(A=*2004.11) (B=*2004.11)									

Fig.3. LOWER GEAR HOUSING

P/C NEWS No:Y00F5762-3
PUBLISHED:2005/5

1,1-1 inc.(1), (1-1) ~ 59
1-2,1-3 inc.(1-2), (1-3) ~ 72



Remarks
 INTERCHANGEABLE BY SIMULTANEOUS REPLACEMENT WITH FIG.2 NO.1-1/1A-1
 THIS DESIGN CHANGE IS NOT APPLIED TO DRIVE NO.0109-04 AND T109-04.
 INTERCHANGEABLE BY SIMULTANEOUS REPLACEMENT WITH FIG.2 NO.1-1/1A-1 AND FIG.3 NO.36-1.
 THIS DESIGN CHANGE IS NOT APPLIED TO DRIVE NO.0109-04 AND T109-04.
 INTERCHANGEABLE BY SIMULTANEOUS REPLACEMENT WITH NO.44-3 AND 50-2.

OCF10-G57602 3. LOWER GEAR HOUSING

(A)=SD40
(B)=SD40-4T
(C)=SD50

(D)=SD50-4T
(E)=
(F)=

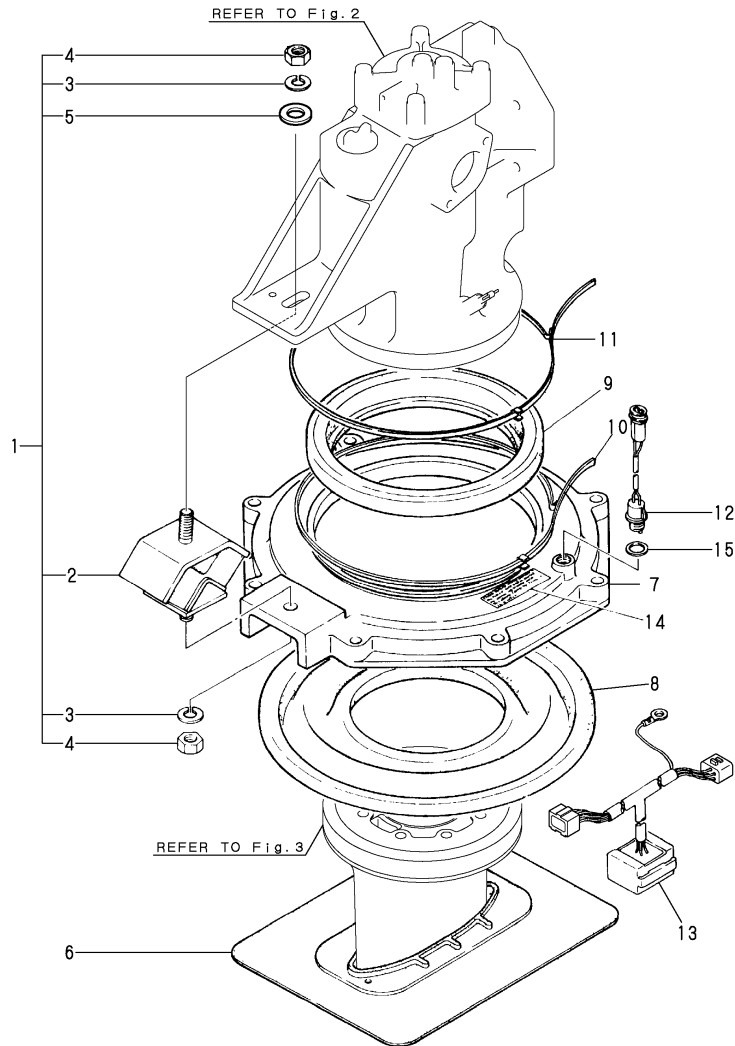
REF.	LEV.	PARTS NO.	DESCRIPTION	Q'TY						I	R
				(A)	(B)	(C)	(D)	(E)	(F)		
86	1	26793-080002	LOCK NUT M 8	1	1	1	1				W
		(A=*2004.11) (B=*2004.11)									

Fig.4. RUBBER MOUNT & SEAL FLANGE

(A)=SD40
(B)=SD40-4T
(C)=SD50

(D)=SD50-4T
(E)=
(F)=

P/C NEWS No:Y00F5762-1
PUBLISHED:2005/2



REF.	LEV.	PARTS NO.	DESCRIPTION	QTY						I	R
				(A)	(B)	(C)	(D)	(E)	(F)		
1	1	796420-08630	ABSORBER ASSY, SHOCK	1		1					1
1A	1	796440-08630	RUBBER ASSY,CUSHION	1	1	1	1				2
2	2	196420-02310	ABSORBER, SHOCK	1		1					1
2A	2	196440-02380	ABSORBER 430	1	1	1	1				2
3	2	22217-120000	SPRING WASHER 12	2	2	2	2				
4	2	26716-120002	NUT 12	2	2	2	2				
I	5	2	196440-02390	WASHER	1	1	1	1			W
		(A=*2004.03)	(B=*2004.03)								
6	1	196420-02550	RUBBER, PROTECTION	1	1						
I	6-1	1	196420-02551	RUBBER, PROTECTION	1	1	1	1			N
		(A=*2001.10)	(B=D/#T5006)								
7	1	196420-02701	SEAL FLANGE	1	1	1	1				
8	1	196420-02710	DIAPHRAGM (A)	1	1	1	1				
9	1	196420-02720	DIAPHRAGM (B)	1	1	1	1				
10	1	196420-02730	BAND 199	1	1	1	1				
11	1	196420-02740	BAND 236	1	1	1	1				
12	1	196420-02801	SEAL SENSOR	1	1	1	1				
13	1	196420-02812	AMPLIFIER	1	1	1	1				
14	1	196420-02820	LABEL	1	1	1	1				
15	1	23418-140000	PACKING 14	1	1	1	1				

Remarks

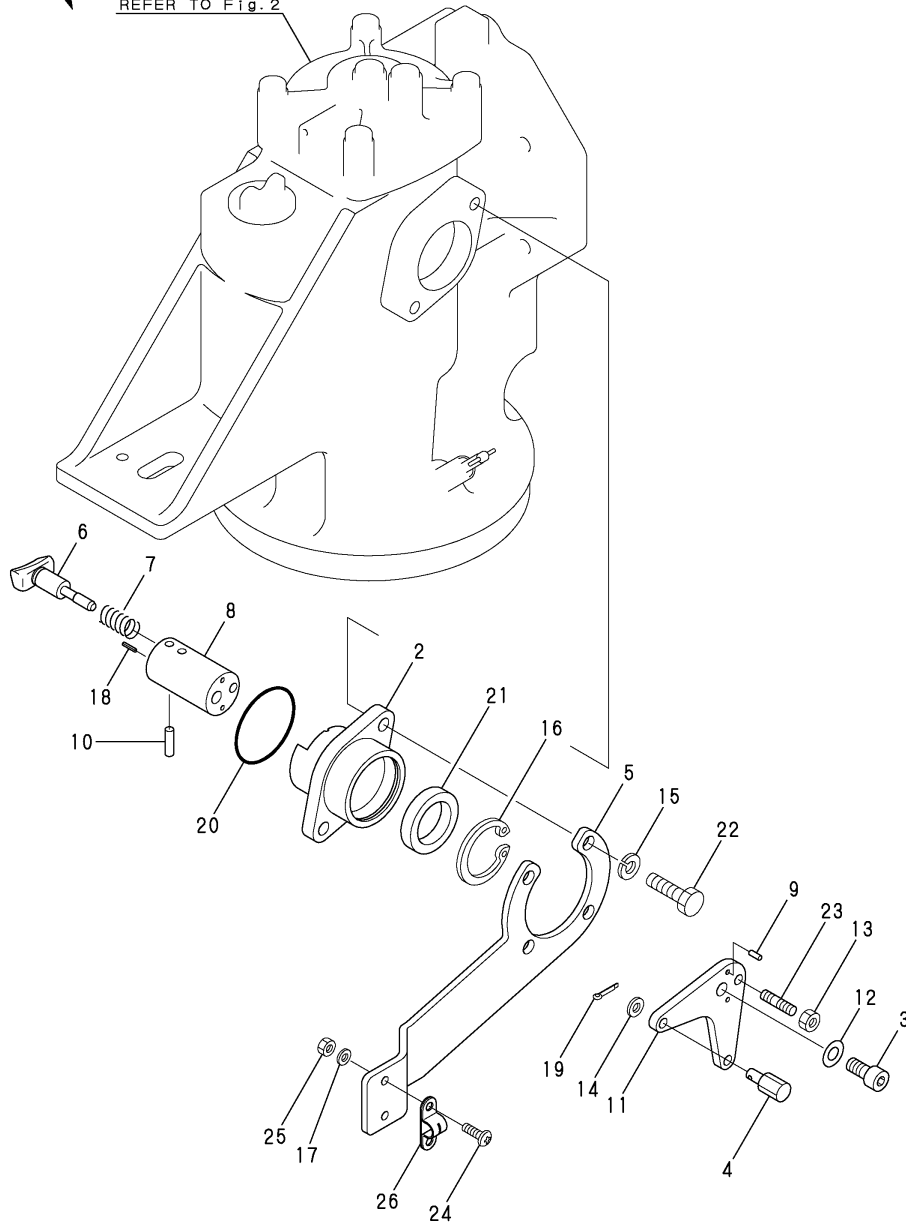
- (1)FOR 3JH3CE,3JH4CE
- (2)FOR 4JH3CE,4JH4CE,4JH3-TCE

Fig.5. SHIFT LEVER

P/C NEWS No:Y00F5762-1
PUBLISHED:2005/2

1inc.2 ~ 21

REFER TO FIG.2



OCF10-G57602 5. SHIFT LEVER

(A)=SD40
(B)=SD40-4T
(C)=SD50

(D)=SD50-4T
(E)=
(F)=

REF.	LEV.	PARTS NO.	DESCRIPTION	Q'TY						I	R
				(A)	(B)	(C)	(D)	(E)	(F)		
1	1	796440-06260	SHIFT LEVER ASSY.	1							
I	1-1	796440-06261	SHIFT LEVER ASSY.	1	1	1	1				S
(A=*2001.01)											
2	2	196440-06050	SUPPORT,SHIFT LEVER	1	1	1	1				
3	2	196440-06070	BOLT,SHIFT LEVER	1	1	1	1				
4	2	177073-06200	PIVOT(M5)	1							
I	4-1	177073-06210	PIVOT(10-32UNF)	1	1	1	1				S
(A=*2001.01)											
5	2	196440-06290	BRACKET	1	1	1	1				
6	2	177088-06390	SHIFTER	1	1	1	1				
7	2	196322-06581	SPRING	1	1	1	1				
8	2	196324-06590	SHAFT, LEVER	1	1	1	1				
9	2	196320-06610	PIN 3X8	2	2	2	2				
10	2	196322-06610	PIN 5X18	1	1						
I	10-1	196322-06611	PIN 5X18	1	1	1	1				N
(A=*2002.01) (B=D/#T5036)											
11	2	196440-06610	PLATE,SHIFT LEVER	1	1	1	1				
12	2	196322-06630	SHIM	5	5	5	5				
13	2	196324-06900	NUT 6	1	1	1	1				
14	2	22137-060000	WASHER 6, POLISHED	1	1	1	1				
15	2	22217-080000	SPRING WASHER 8	2	2	2	2				
16	2	22252-000420	CIRCLIP 42	1	1	1	1				
17	2	22287-050000	WASHER 5	2	2	2	2				
18	2	22351-020010	SPRING PIN 2X10	1	1	1	1				
19	2	22417-250200	COTTER PIN 2.5X20	1							
19-1	2	196315-06290	COTTER PIN 2.5X12	1							N
(A=*2000.02)											
I	19-2	22413-250163	COTTER PIN 2.5X16	1	1	1	1				N
(A=*2001.04)											
20	2	24321-000400	O-RING 1A G-40.0	1	1	1	1				
21	2	24421-284008	SEAL TC28 40 08, OIL	1	1	1	1				
22	1	26206-080302	BOLT M8X30	2	2	2	2				
23	1	26216-060142	STUD M 6X 14 PLATED	1	1	1	1				
24	1	26557-050162	SCREW M 5X 16	2	2	2	2				
25	1	26716-050002	NUT M 5	2	2	2	2				
26	1	41710-000410	CLAMP	1	1	1	1				

Fig.6. LUB.OIL WASTE PUMP

P/C NEWS No:Y00F5762-1
PUBLISHED:2005/2

OCF10-G57602 6. LUB.OIL WASTE PUMP

(A)=SD40
(B)=SD40-4T
(C)=SD50

(D)=SD50-4T
(E)=
(F)=

REF.	LEV.	PARTS NO.	DESCRIPTION	Q'TY						I	R
				(A)	(B)	(C)	(D)	(E)	(F)		
I	1	1 196311-92960 (A=*2001.02)	JOINT	1	1	1	1				W
I	2	1 196311-92970 (A=*2001.02)	HOSE	1	1						W
I	2-1	1 196440-92970 (A=*2002.01) (B=D/#T5036)	HOSE, OIL PUMP	2	2	2	2				N
I	3	1 24311-000100 (A=*2001.02)	O-RING 1A P-10.0	1	1	1	1				W
I	4	1 28210-000080 (A=*2001.02)	PUMP	1	1	1	1				W

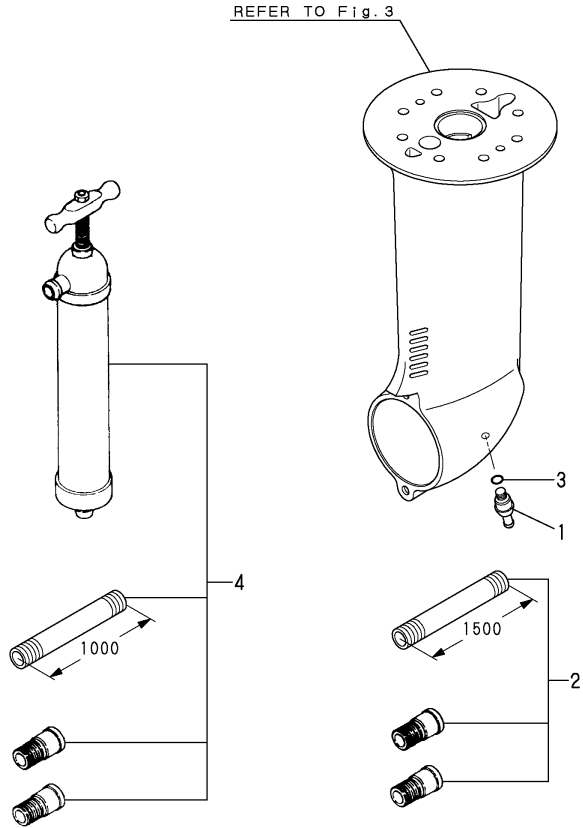
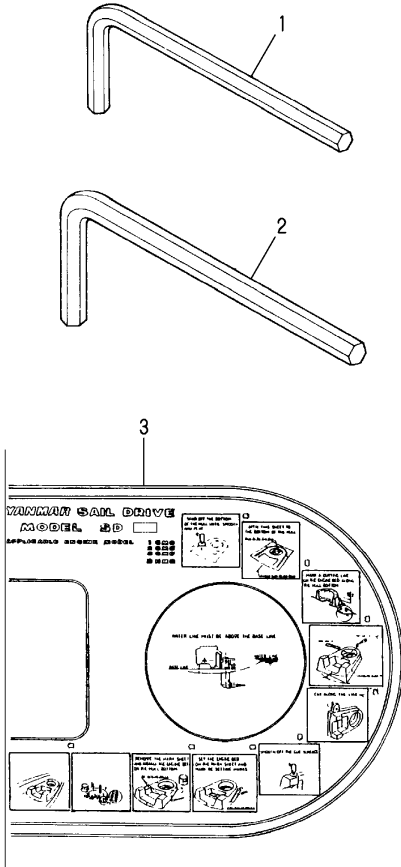


Fig.7. TOOL

P/C NEWS No:Y00F5762-1
PUBLISHED:2005/2



OCF10-G57602 7. TOOL

(A)=SD40
(B)=SD40-4T
(C)=SD50

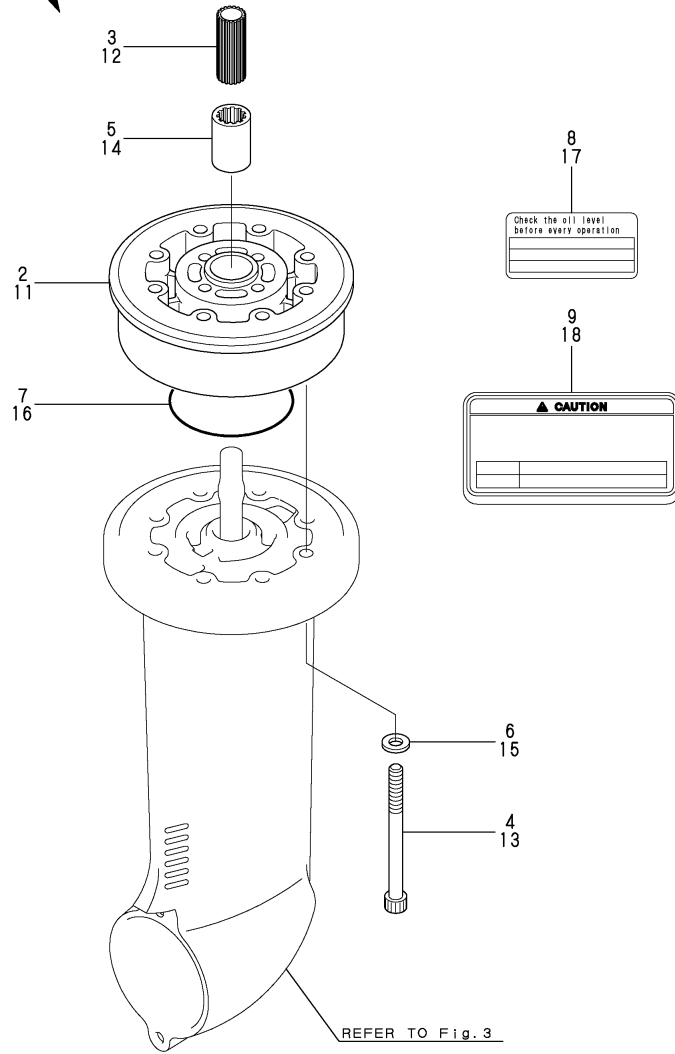
(D)=SD50-4T
(E)=
(F)=

REF.	LEV.	PARTS NO.	DESCRIPTION	Q'TY						I	R
				(A)	(B)	(C)	(D)	(E)	(F)		
1	1	28150-060000	BAR WRENCH 6	1	1	1	1				W
		(A=FROM 1ST)									
2	1	28150-080000	BAR WRENCH 8	1	1	1	1				W
		(A=FROM 1ST)									
3	1	196420-92011	MARK SHEET	1	1						W
		(A=FROM 1ST)									
I	3-1	1 196420-92012	SHEET, MARK	1	1	1	1				N
		(A=*2004.10) (B=*2004.10)									

Fig.8. EXTENSION(OPTIONAL)

P/C NEWS No:Y00F5762-2
PUBLISHED:2005/4

1 inc.2 ~ 9
10 inc.11 ~ 18



OCF10-G57602 8. EXTENSION(OPTIONAL)

(A)=SD40
(B)=SD40-4T
(C)=SD50

(D)=SD50-4T
(E)=
(F)=

REF.	LEV.	PARTS NO.	DESCRIPTION	Q'TY						I	R		
				(A)	(B)	(C)	(D)	(E)	(F)				
I	1	1	796450-02450	EXTENSION (58) ASSY (C=*2005.03) (D=*2005.03)		1	1					W	1
	2	2	196440-02450	EXTENSION 58		1	1						
	3	2	196440-02470	SHAFT, EXTENSION 58		1	1						
	4	2	196440-02480	BOLT M10X115		8	8						
	5	2	196324-04450	SLEEVE		1	1						
	6	2	22113-100000	WASHER 10		8	8						
	7	2	24321-000800	O-RING 1A G-80.0		1	1						
	8	2	196440-02791	LABEL,EXTENSION 58		1	1						
	9	2	196440-02811	LABEL,EXTENSION 58		1	1						
I	10	1	796450-02460	EXTENSION (100) ASSY (C=*2005.03) (D=*2005.03)		1	1					W	1
	11	2	196440-02460	EXTENSION 100		1	1						
	12	2	196324-04560	SHAFT, EXTENSION 100		1	1						
	13	2	196440-02490	BOLT M10X160		8	8						
	14	2	196324-04450	SLEEVE		1	1						
	15	2	22113-100000	WASHER 10		8	8						
	16	2	24321-000800	O-RING 1A G-80.0		1	1						
	17	2	196440-02801	LABEL,EXTENSION 100		1	1						
	18	2	196440-02821	LABEL,EXT.100 SP.OIL		1	1						

Remarks
(1)SELECTION USE PARTS.

Fig.9. SPECIAL TOOL(A)(OPTIONAL)

OCF10-G57602 9. SPECIAL TOOL(A)(OPTIONAL)

(A)=SD40
(B)=SD40-4T
(C)=SD50

(D)=SD50-4T
(E)=
(F)=

REF.	LEV.	PARTS NO.	DESCRIPTION	Q'TY						I	R
				(A)	(B)	(C)	(D)	(E)	(F)		
1	1	196440-92010	SPLINE SOCKET 29	1	1	1	1				
2	1	196440-92020	SPLINE SOCKET 34	1	1	1	1				
3	1	196320-92120	SOCKET	1	1	1	1				

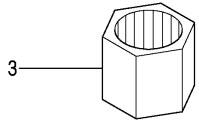
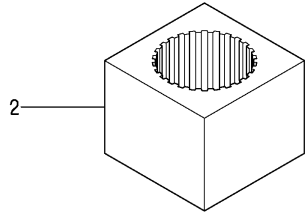
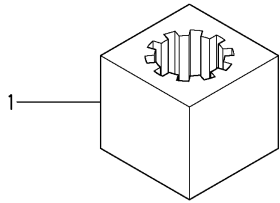
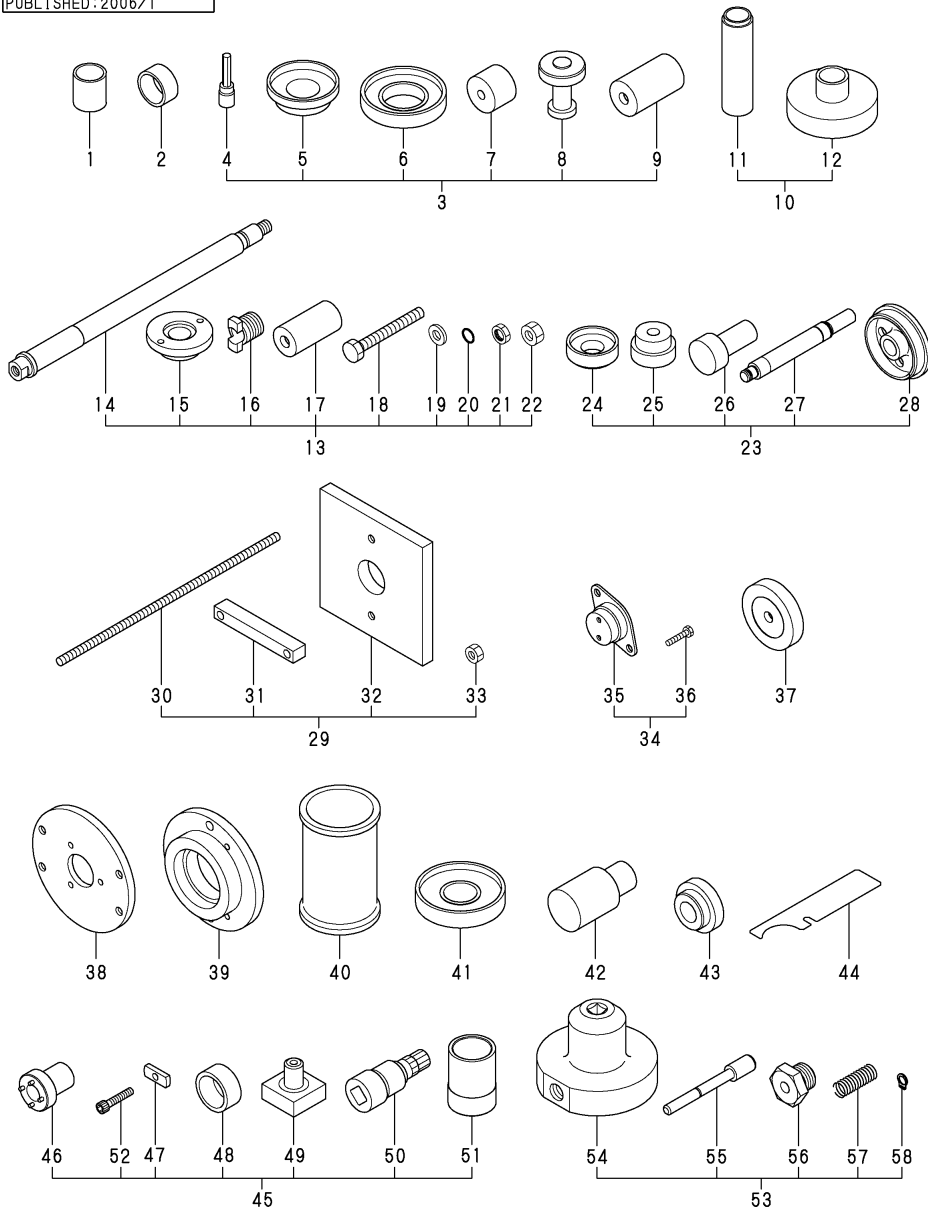


Fig.10. SPECIAL TOOL(B)(OPTIONAL)

P/C NEWS No.: Y00F5762-4
PUBLISHED: 2006/1



Remarks
(1) THIS DESIGN CHANGE IS NOT APPLIED TO DRIVE NO.0109-04 AND T109-04.

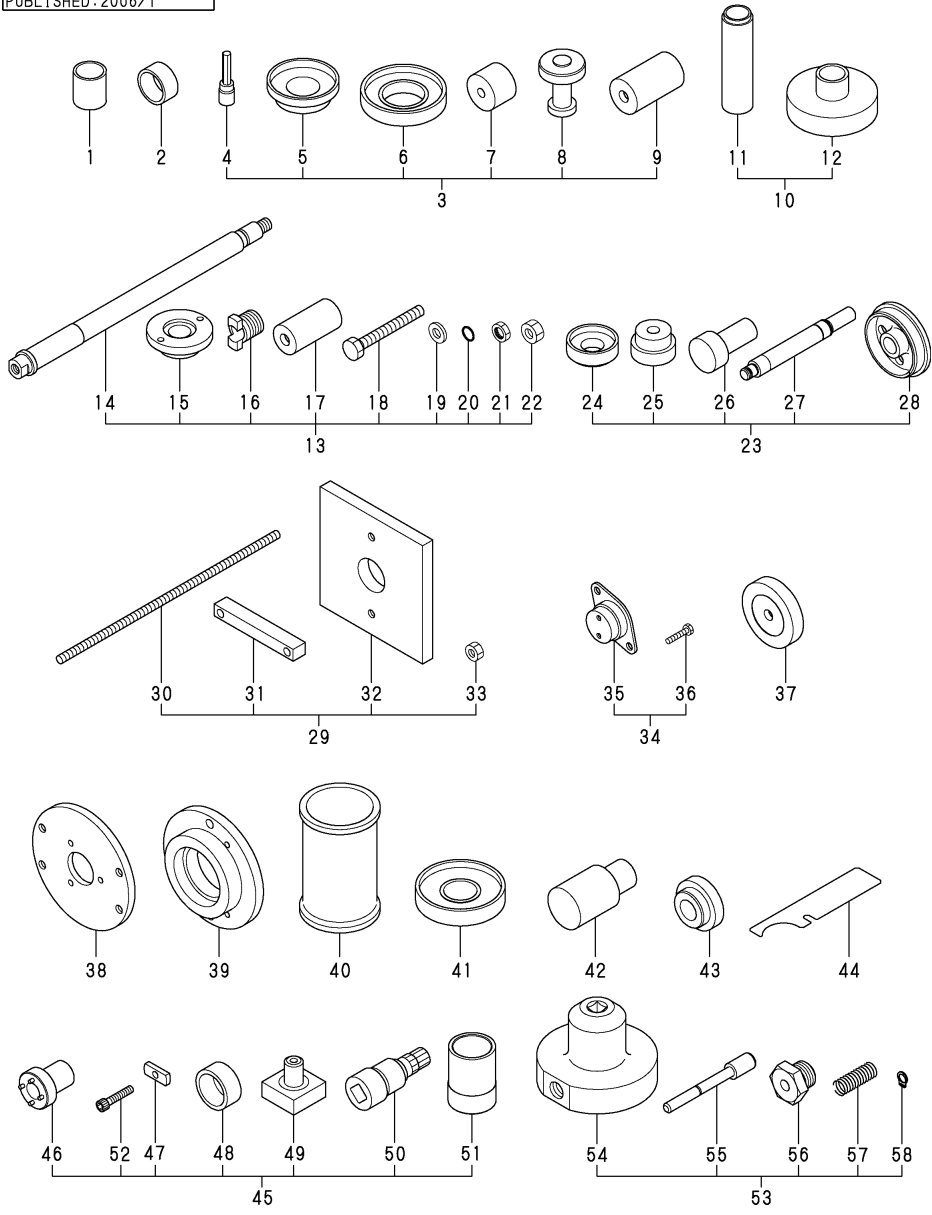
OCF10-G57602 10. SPECIAL TOOL(B)(OPTIONAL)

(A)=SD40 (D)=SD50-4T
(B)=SD40-4T (E)=
(C)=SD50 (F)=

REF.	LEV.	PARTS NO.	DESCRIPTION	QTY						I	R
				(A)	(B)	(C)	(D)	(E)	(F)		
1	1	196312-92110	SLEEVE, BUILD-UP	1	1	1	1				
2	1	196440-92120	TOOL 43X20	1	1	1	1				
3	1	196440-92140	TOOL CMP, UPPER GEAR	1	1	1	1				
4	2	196420-92440	SOCKET 8	1	1	1	1				
5	2	196311-92560	RING, BUILD-UP	1	1	1	1				
6	2	196320-92560	TOOL B85	1	1	1	1				
7	2	196320-92600	TOOL NB20X25	1	1	1	1				
8	2	196311-92690	REPLACER 32X52	1	1	1	1				
9	2	196320-92690	TOOL	1	1	1	1				
10	1	196440-92150	TOOL CMP, DRIVE SHAFT	1	1	1	1				
11	2	196440-92110	TOOL 34X125	1	1	1	1				
12	2	196440-92130	TOOL NB36X50	1	1	1	1				
13	1	196440-92160	TOOL CMP, D SHAFT NB	1	1	1	1				
14	2	196420-92650	TOOL SHAFT	1	1	1	1				
15	2	196420-92660	TOOL 25/47	1	1	1	1				
16	2	196440-92680	TOOL NB28	1	1	1	1				
17	2	196420-92690	REPLACER 30X36	1	1	1	1				
18	2	196320-92700	BOLT M12X 85	1	1	1	1				
19	2	22137-120000	WASHER 12, POLISHED	1	1	1	1				
20	2	24311-000160	O-RING 1A P-16.0	1	1	1	1				
21	2	26606-140002	NUT M14	1	1	1	1				
22	2	26711-120002	NUT M12	1	1	1	1				
23	1	196440-92170	TOOL CMP, P SHAFT B	1	1	1	1				
24	2	196311-92570	RING, BUILD-UP	1	1	1	1				
25	2	196440-92580	TOOL TB62	1	1	1	1				
26	2	196440-92590	TOOL, GUIDE 32	1	1	1	1				
27	2	196322-92620	TOOL B17X25	1	1	1	1				
28	2	196320-92640	GUIDE	1	1	1	1				
29	1	196440-92180	TOOL CMP, P SHAFT MEA	1	1	1	1				
30	2	196440-92250	BOLT, P SHAFT MEASURE	1	1	1	1				
31	2	196440-92260	TOOL, P SHAFT FIXED	1	1	1	1				
32	2	196440-92270	STAND, P SHAFT	1	1	1	1				
33	2	26716-120002	NUT 12	4	4	4	4				
34	1	196440-92190	TOOL CMP, BACKLUSH ME	1	1	1	1				
35	2	196440-92300	TOOL, U GEAR MEASURE	1	1	1	1				
36	2	26116-060302	BOLT M 6X 30 PLATED	1	1	1	1				
37	1	196322-92260	TOOL, U BRG MEASURE	1	1	1	1				
38	1	196440-92280	TOOL, D SHAFT BRG	1	1	1	1				
39	1	196440-92290	TOOL, P SHAFT BRG	1	1	1	1				
40	1	196311-92510	BRACKET	1	1	1	1				
41	1	196322-92550	TOOL B85	1	1	1	1				
42	1	196440-92860	TOOL OS34	1	1	1	1				
43	1	196320-92880	TOOL OS45X62	1	1	1	1				
44	1	196440-92200	TEMPLATE, PIPE ADJUST	1	1	1	1				W
(A=*2000.05)											
45	1	196440-92390	TOOL, T LIMIT CMP	1	1	1	1				W 1
(A=D#0022-04) (B=D#T022-04)											
46	2	196420-92300	SOCKET WRENCH	1	1	1	1				W 1
(A=D#0022-04) (B=D#T022-04)											
47	2	196420-92340	TOOL 35X6	1	1	1	1				W 1
(A=D#0022-04) (B=D#T022-04)											

Fig.10. SPECIAL TOOL(B)(OPTIONAL)

P/C NEWS No: Y00F5762-4
PUBLISHED: 2006/1



(A)=SD40
(B)=SD40-4T
(C)=SD50
(D)=SD50-4T
(E)=
(F)=

REF.	LEV.	PARTS NO.	DESCRIPTION	QTY						I	R
				(A)	(B)	(C)	(D)	(E)	(F)		
48	2	196420-92350 (A=D#0022-04) (B=D#T022-04)	TOOL 49X22	1	1	1	1			W	1
49	2	196440-92400 (A=D#0022-04) (B=D#T022-04)	ASSEMBLY STAND	1	1	1	1			W	1
50	2	196440-92421 (A=D#0022-04) (B=D#T022-04)	SPLINE WRENCH	1	1	1	1			W	1
51	2	196440-92440 (A=D#0022-04) (B=D#T022-04)	INSPECTION STAND	1	1	1	1			W	1
52	2	26116-080402 (A=D#0022-04) (B=D#T022-04)	BOLT M 8X 40 PLATED	1	1	1	1			W	1
I 53	1	196450-92100 (A=*2005.08) (B=*2005.08)	TL CMP,P NUT FIXED (C=*2005.08) (D=*2005.08)	1	1	1	1			W	
I 54	2	196450-92110 (A=*2005.08) (B=*2005.08)	BASE,P NUT FIXED (C=*2005.08) (D=*2005.08)	1	1	1	1			W	
I 55	2	196450-92120 (A=*2005.08) (B=*2005.08)	PIN,P NUT FIXED (C=*2005.08) (D=*2005.08)	2	2	2	2			W	
I 56	2	196450-92130 (A=*2005.08) (B=*2005.08)	PLUG,P NUT FIXED (C=*2005.08) (D=*2005.08)	2	2	2	2			W	
I 57	2	196450-92140 (A=*2005.08) (B=*2005.08)	SPRING,P NUT FIXED (C=*2005.08) (D=*2005.08)	2	2	2	2			W	
I 58	2	196450-92150 (A=*2005.08) (B=*2005.08)	RING,P NUT FIXED (C=*2005.08) (D=*2005.08)	2	2	2	2			W	

Remarks
(1) THIS DESIGN CHANGE IS NOT APPLIED TO DRIVE NO.0109-04 AND T109-04.

Part Number Index

All parts are stipulated in the order of part numbers.

(Depending on the area in which the part is used.)

This index will display the location of the part according to each part number.

PARTS No. INDEX

PARTS No.	Fig.	Ref.No.
177073-02431	2	92
177073-06200	5	4
177073-06210	5	4 -1
177088-06390	5	6
177099-02130	2	5
189010-01130	2	36
	3	34
196311-02060	1	1
196311-02310	3	37
196311-92510	10	40
196311-92560	10	5
196311-92570	10	24
196311-92690	10	8
196311-92960	6	1
196311-92970	6	2
196312-92110	10	1
196313-04400	3	18
196315-06290	5	19 -1
196320-02230	2	12
196320-02650	3	10
196320-04400	2	68
196320-04410	2	72
196320-06610	5	9
196320-92120	9	3
196320-92560	10	6
196320-92600	10	7
196320-92640	10	28
196320-92690	10	9
196320-92700	10	18
196320-92880	10	43
196322-02320	2	24
196322-04152	2	55
196322-04240	2	52
196322-04301	2	62
196322-04321	2	63
196322-04340	2	64
196322-04361	2	65
196322-04370	2	66
196322-04731	2	75
196322-04760	2	76
196322-04781	2	53
196322-04940	2	54
196322-06581	5	7
196322-06610	5	10
196322-06611	5	10 -1
196322-06630	5	12
196322-92260	10	37
196322-92550	10	41
196322-92620	10	27
196324-04380	2	67

PARTS No.	Fig.	Ref.No.
196324-04450	3	59
	8	5
		14
196324-04480	2	73
196324-04490	2	74
196324-04560	8	12
196324-04910	3	48
196324-06590	5	8
196324-06900	5	13
196324-09250	3	54
196326-02410	2	37
196326-02420	2	40
		40 -1
	3	35
196326-04250	2	61
196420-02050	2	4
	3	3
196420-02310	4	2
196420-02350	2	37 -2
196420-02550	4	6
196420-02551	4	6 -1
196420-02580	2	88
196420-02620	3	9
196420-02652	3	16
196420-02701	4	7
196420-02710	4	8
196420-02720	4	9
196420-02730	4	10
196420-02740	4	11
196420-02801	4	12
196420-02812	4	13
196420-02820	4	14
196420-02981	2	84
196420-09220	3	76
196420-09260	3	55
196420-92011	7	3
196420-92012	7	3 -1
196420-92300	10	46
196420-92340	10	47
196420-92350	10	48
196420-92440	10	4
196420-92650	10	14
196420-92660	10	15
196420-92690	10	17
196431-02390	2	80
196431-02950	2	82
196431-02960	2	83
196440-02060	2	93
196440-02110	1	2
196440-02130	1	2 A

PARTS No.	Fig.	Ref.No.
196440-02140	2	6
196440-02160	2	9
196440-02170	2	10
196440-02180	2	11
196440-02240	3	36
196440-02241	3	36 -1
196440-02242	3	36 -2
196440-02250	2	18
196440-02320	2	30
196440-02380	4	2 A
196440-02390	4	5
196440-02410	2	37 -1
196440-02450	8	2
196440-02460	8	11
196440-02470	8	3
196440-02480	8	4
196440-02490	8	13
196440-02540	3	5
196440-02550	3	6
196440-02600	3	7
196440-02660	3	78
196440-02690	3	79
196440-02700	3	80
196440-02750	2	89
196440-02760	2	90
196440-02770	2	91
196440-02771	2	91 -1
196440-02780	2	91 A
196440-02781	2	91 A-1
196440-02791	8	8
196440-02801	8	17
196440-02811	8	9
196440-02821	8	18
196440-02870	3	17
196440-04130	2	51
196440-04150	2	51 A
196440-04300	1	9
196440-04310	1	9 A
196440-04450	3	44
196440-04451	3	44 -1
196440-04452	3	44 -2
196440-04453	3	44 -3
196440-04490	2	74 -1
196440-04510	3	53
196440-04511	3	53 -1
196440-04512	3	53 -2
196440-04513	3	53 -3
196440-04540	3	59 -1
196440-04760	3	47 -1
196440-04770	3	45

PARTS No.	Fig.	Ref.No.
196440-04780	3	46
196440-04790	3	47
196440-04800	3	50
196440-04801	3	50 -1
196440-04802	3	50 -2
196440-06050	5	2
196440-06070	5	3
196440-06290	5	5
196440-06610	5	11
196440-09150	3	82
196440-09160	3	83
196440-09170	3	84
196440-09180	3	85
196440-09200	3	73
196440-09220	3	75
196440-09260	3	77 -1
		77 -2
196440-09300	3	56
196440-92010	9	1
196440-92020	9	2
196440-92110	10	11
196440-92120	10	2
196440-92130	10	12
196440-92140	10	3
196440-92150	10	10
196440-92160	10	13
196440-92170	10	23
196440-92180	10	29
196440-92190	10	34
196440-92200	10	44
196440-92250	10	30
196440-92260	10	31
196440-92270	10	32
196440-92280	10	38
196440-92290	10	39
196440-92300	10	35
196440-92390	10	45
196440-92400	10	49
196440-92421	10	50
196440-92440	10	51
196440-92580	10	25
196440-92590	10	26
196440-92680	10	16
196440-92860	10	42
196440-92970	6	2 -1
196450-02060	2	93 A
196450-02390	2	80 -1
196450-92100	10	53
196450-92110	10	54
196450-92120	10	55

MODEL : SD40/50(-4T)
PC NO : 0CF10-G57602

PARTS No. INDEX

PARTS No.	Fig.	Ref.No.
196450-92130	10	56
196450-92140	10	57
196450-92150	10	58
41710-000410	5	26
796420-08630	4	1
796440-02900	2	1
796440-02901	2	1 -1
796440-02902	2	1 -2
796440-02910	3	1
796440-02911	3	1 -1
796440-02912	3	1 -2
796440-02913	3	1 -3
796440-02940	2	1 A
796440-02941	2	1 A-1
796440-02942	2	1 A-2
796440-06260	5	1
796440-06261	5	1 -1
796440-08630	4	1 A
796450-02450	8	1
796450-02460	8	10

PARTS No.	Fig.	Ref.No.
-----------	------	---------

PARTS No.	Fig.	Ref.No.
-----------	------	---------

PARTS No.	Fig.	Ref.No.
-----------	------	---------



YANMAR CO.,LTD.